



# INSECT STUDY

## Merit Badge Requirements

- 1) Tell how insects are different from all other animals. Show the differences between insects, centipedes, and spiders.
- 2) Point out and name the main parts of an insect.
- 3) Collect and mount fifty different species. Include six orders and eighteen families of insects. Label each with common and scientific names, where possible.  
*\*NOTE: Some insects are endangered species and are protected by federal and state law. Every species is found only in its own special type of habitat. Be sure to check natural resource authorities in advance to be sure that you will not be collecting any specimens from any habitat of a species that is known to be protected or endangered.*
- 4) Describe the characteristics that distinguish the principal families and orders of insects.
- 5) Show your collection.
- 6) Compare the life histories of a butterfly and a grasshopper. Tell how they are different.
- 7) Raise an insect through complete metamorphosis from its larval stage to its adult stage (eg, raise a butterfly or moth from a caterpillar).
- 8) Tell the things that make social insects different from solitary insects.
- 9) Observe an ant colony or a beehive. Tell what you saw.
- 10) From your collection, identify:
  - A) Four species of insects helpful to humans.
  - B) Six species of insects harmful to humans.Describe some general methods of insect control.
- 11) Tell how insects fit in the food chains of other insects, fish, birds, and mammals.

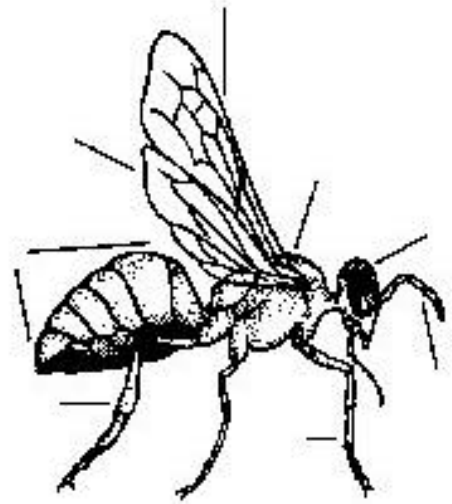
## Requirement 1

How are insects different from all other animals? \_\_\_\_\_  
\_\_\_\_\_  
\_\_\_\_\_

What are the differences between insects, centipedes, and spiders? \_\_\_\_\_  
\_\_\_\_\_  
\_\_\_\_\_

## Requirement 2

Point out and name the main parts of an insect.



## Requirement 3

Collect and mount 50 different species. Include six orders and eighteen families of insects. Label each with common and scientific names, where possible.

What six orders did you include in your collection?

\_\_\_\_\_, \_\_\_\_\_, \_\_\_\_\_  
\_\_\_\_\_, \_\_\_\_\_, \_\_\_\_\_

What were the eighteen families that you included in your collection?

\_\_\_\_\_  
\_\_\_\_\_  
\_\_\_\_\_  
\_\_\_\_\_



**Requirement 8**

What things make social insects different from solitary insects? \_\_\_\_\_  
\_\_\_\_\_  
\_\_\_\_\_  
\_\_\_\_\_  
\_\_\_\_\_  
\_\_\_\_\_  
\_\_\_\_\_  
\_\_\_\_\_  
\_\_\_\_\_  
\_\_\_\_\_  
\_\_\_\_\_

**Requirement 9**

Observe an ant colony or a beehive. Tell what you saw: \_\_\_\_\_  
\_\_\_\_\_  
\_\_\_\_\_  
\_\_\_\_\_  
\_\_\_\_\_  
\_\_\_\_\_  
\_\_\_\_\_  
\_\_\_\_\_  
\_\_\_\_\_  
\_\_\_\_\_  
\_\_\_\_\_

**Requirement 10**

From your collection, identify four species of insects helpful to humans:  
\_\_\_\_\_

From your collection, identify six species of insects harmful to humans.  
\_\_\_\_\_

Describe some general methods of insect control: \_\_\_\_\_  
\_\_\_\_\_  
\_\_\_\_\_  
\_\_\_\_\_  
\_\_\_\_\_  
\_\_\_\_\_

## Requirement 11

Tell how insects fit in the food chain of other insects: \_\_\_\_\_

---

---

---

---

Tell how insects fit in the food chain of fish: \_\_\_\_\_

---

---

---

---

Tell how insects fit in the food chain of birds: \_\_\_\_\_

---

---

---

---

Tell how insects fit in the food chain of mammals: \_\_\_\_\_

---

---

---

---